

Best Practices and Current Trends in School Behavioral Threat Assessment

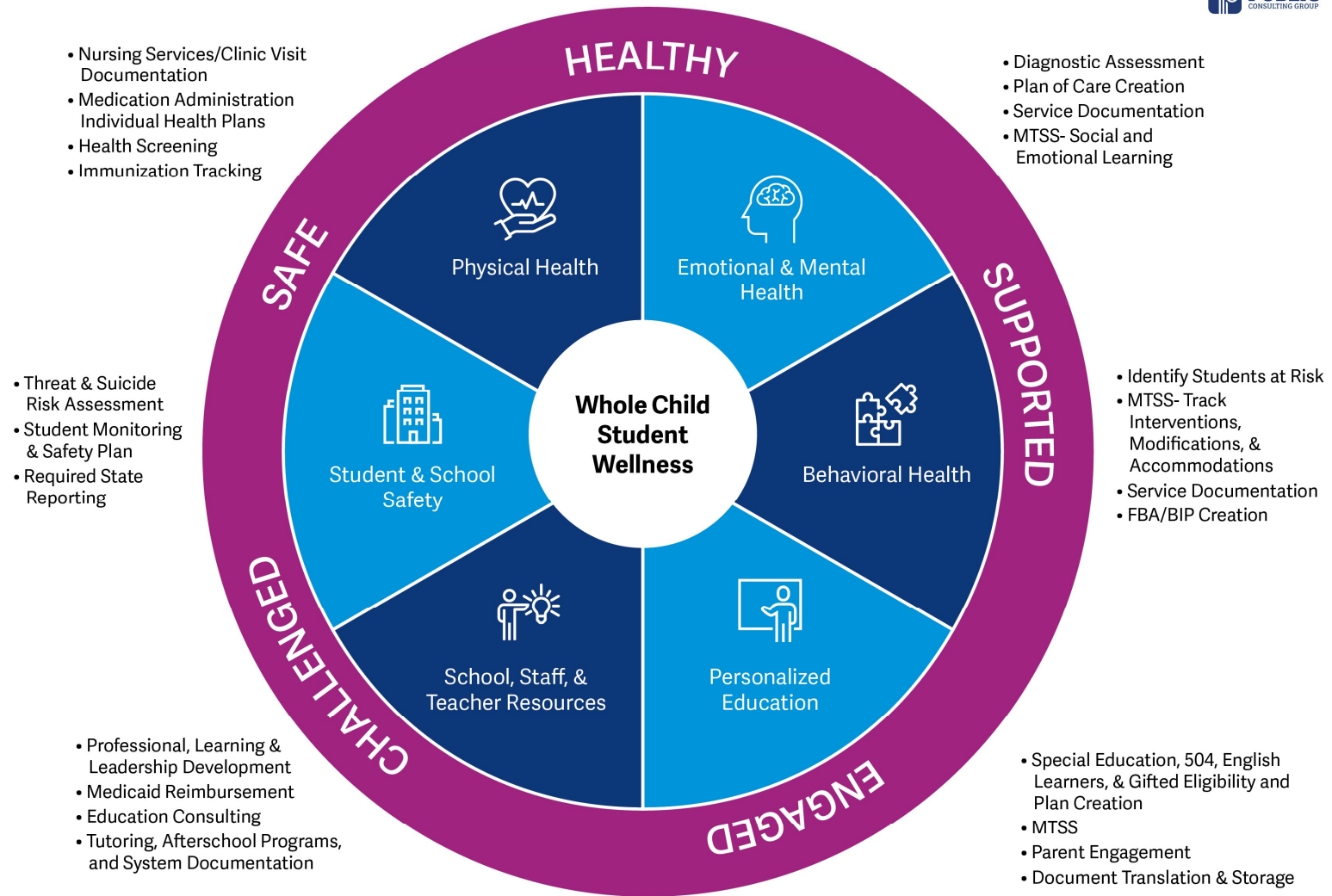
New Jersey School Board Association Spring Conference

May 10th, 2024 – Jason Matlock, MPA. Senior Associate, PCG

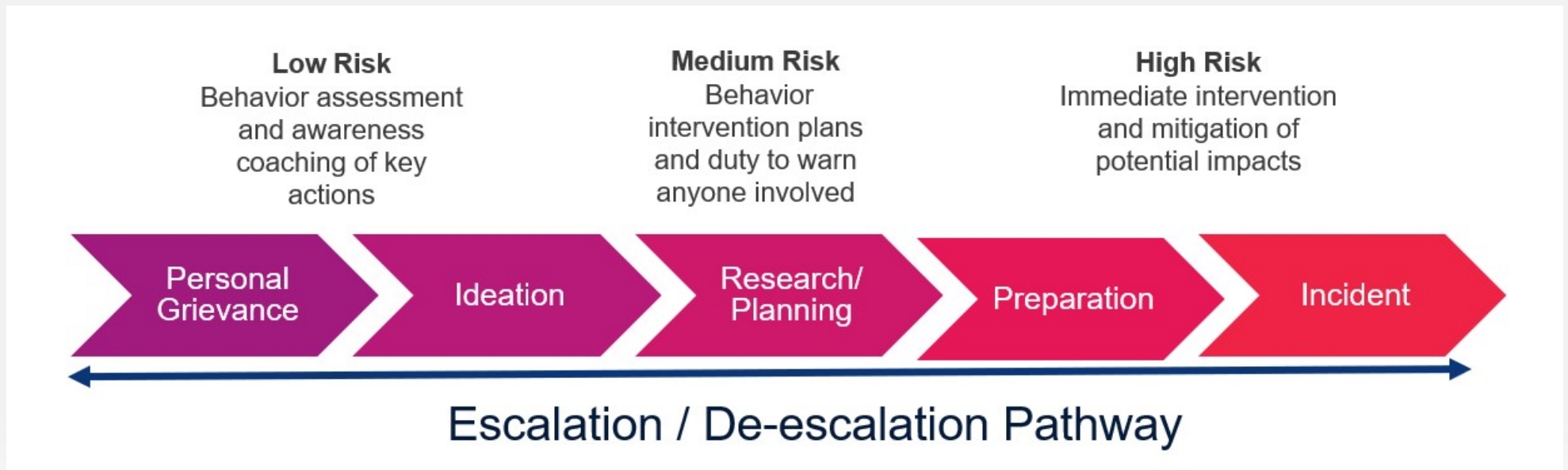
Agenda

Welcome	2
Our Core Approach	3
Pathway to Violence	4
The Big Three	6
NJ Guidance	7
Trends and Considerations	8
Pain Points & Solutions	9
Here if You Need Us	10





Intervention as far to the left as possible





““””

**Assessing the threat is only
the beginning...**

The Big Three

- National Threat Assessment Center (NTAC)
 - Also referred to as the Secret Service Model
 - Basis for the Ontic/SIGMA training provided by the state of New Jersey
- Salem Keizer Cascade (SKC)
 - Created under the leadership of John Van Dreal in the SKC school district
 - Educator focused approach looking to broader collaboration both internally and with the outside community
- Comprehensive School Threat Assessment Guidelines (CSTAG)
 - Created under the leadership of Dewey Cornell at the University of Virginia
 - Research focused approach focused on the mindset of the assessor



The Jersey Way

The Team

Cross functional – 5 members

The Structure

Flexible depending on needs

The Process

Aligned to NTAC and Dept of Ed

Guidance on the Establishment of Behavioral Threat Assessment and Management Teams - [2023](#)

N.J.S.A. [18A:17-43.4](#)

Enhancing School Safety Using a Threat Assessment Model – [June 2018](#)

Threat Assessment in Schools – [May 2002](#)



Trends and Considerations



Who is the district sponsor, who are their partners?

What is the broader climate plan and where does this fit?

How are you managing privacy and stigma concerns?

What is a parent's role?

How long should an assessment take?

How long will a monitoring plan be in place?

What data are you collecting and reporting out?

What is your long-term training and budget plan?

Who will ultimately be responsible for the support plan?



Pain Points & Solutions

**What did you
want to learn
about the most
today?**

**What advice would
you share with
your fellow
attendees based
on your journey so
far?**





Jason Matlock, MPA

Senior Associate, Behavioral Threat Assessment and Management

jamatlock@pcgus.com

612-290-0056

Thank you!





Solutions that Matter

